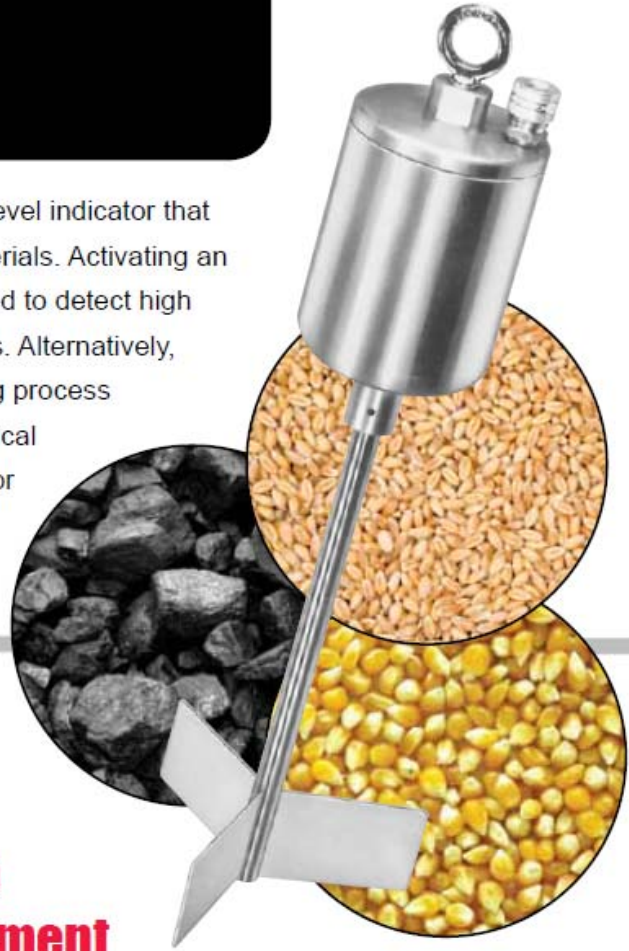


Simple, Affordable Level Detection

The BinMaster tilt switch is a versatile, cost-effective level indicator that can be used in a wide variety of applications and materials. Activating an alert when the device tilts at least 15 degrees, it is used to detect high levels of large, heavy materials in bins, tanks and silos. Alternatively, it can be used to detect plugs or clogs in chutes during process operations. The tilt switch features a simple, mechanical design that allows it to also be used as a high limit sensor when positioned over open piles or conveyor belts.



Versatile Measurement for Tanks & Chutes

Its rugged design offers you reliable operation with only one moving part. When tilted at least 15 degrees, a steel ball inside of the device shifts position and activates a microswitch, alerting the user to a high level or clogged status. Generally, an optional stainless steel paddle extension or plastic sphere is installed on the end of the device to increase the sensitivity of the tilt switch. The tilt switch is installed over a desired control point using a wire rope, chain or other flexible hanger capable of supporting the device.

Tilt Switch Level Indicator

CONTACT YOUR DEALER TODAY:

Gulf Atlantic

INDUSTRIAL EQUIPMENT INCORPORATED
Concrete, Aggregate, and Material Handling Equipment
Concrete Solutions with Rock Solid Results
800-792-7427

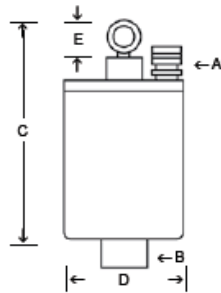
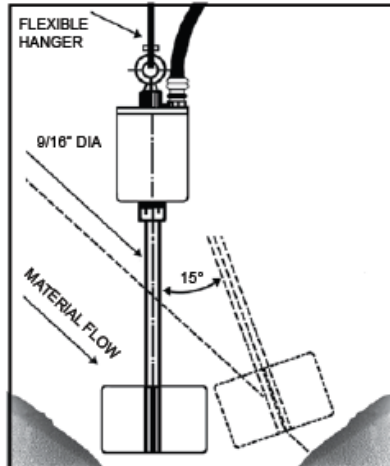
BINMASTER

www.GulfAtlanticEquipment.com

Info@GulfAtlanticEquipment.com

Tilt Switch Level Indicator

The tilt switch is suspended over a control point with wire rope, chain, or cable.* As material comes in contact with the paddle, the unit will begin to tilt. When tilted to 15°, a large steel ball inside the unit shifts position, actuating a micro switch.



INSTALLATION

Suspend the tilt switch over control point with wire rope, chain or flexible hanger capable of supporting the tilt switch plus any paddle extension, if one is used. Do not hang the unit by its electrical cable.

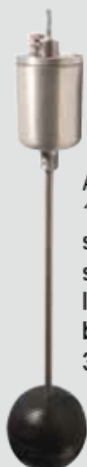
SPECIFICATIONS

| | |
|------------------------|--|
| Housing: | Cast aluminum |
| Weight: | 3 3/4 lb. (1.7 kg) |
| Switch ratings: | 15 A @ 125, or 250 VAC 1/8 HP @ 125 VAC, HP @ 250 VAC 1/2 A @ 125 VDC, 1/4 A @ 250 VDC |

DIMENSIONS

| | |
|-----------------------------|---|
| Connector (A): | 3/8" conduit, grommet for .312- to .437-in. diameter cable |
| Accessory Mount (B): | 9/16" (14 mm) diameter 1/8" roll pin used for connection |
| Length (C): | 9" (229 mm) |
| Diameter (D): | 4" (102 mm) |
| Eye Bolt Hole (E): | 7/8" (22 mm) |

*Wire rope, chain, or cable not included.



A Tilt Switch with the 18" 316 stainless steel shaft and plastic sphere is used in light powder and bulk solids under 30 lb./cu. ft.



A Tilt Switch with an 18" stainless steel shaft and 316 stainless steel paddle is used in rock, aggregate and bulk solid material over 30 lb./cu. ft.

02-11-1M-NPC ISO 9001:2008 Certified

CONTACT YOUR DEALER:

Gulf Atlantic
INDUSTRIAL EQUIPMENT INC.

P. O. Box 2169 Crystal River, FL 34423

(352) 628-6674

(800) 792-7427

Info@GulfAtlanticEquipment.com

Www.GulfAtlanticEquipment.com