

(800)
792-7427

UNIVERSAL JAW CRUSHERS

(352)
628-6674



The Universal Overhead Eccentric Jaw Crushers are constructed from top quality material for rugged service in a tough industry! Universal Jaw Crushers are the most efficient on the market today. A deeper crushing chamber provides better nip angle while reducing rebound, ensuring continuous crushing action with less abrasive wear. Longer throw provides sharp crushing action, leaving fewer slabs and slivers. Radial toggle action with a downward thrust force feeds material and ensures top production with less plugging. Reversible jaws provide longer jaw life, assure less downtime, and greater economy. Each Universal Jaw Crusher is designed with a wide range of discharge settings. Unlike competitive units, the closed-side-setting of the Universal Jaw Crusher is measured from peak to valley on the corrugated jaw plates for improved product sizing control at each designated setting.

Standard Design Features:

- Rigid one-piece fabricated base frame reinforced for unmatched durability and strength.
- Jaw openings are measured from inside the wear plates providing a larger crushing chamber for greater reduction and overall capacities.
- Universal Jaw Crushers are known for their deep crushing chambers that provide a positive, non-rebounding nip for faster throughput.
- Replacement key wedges and heel plates secure the stationary jaw plate and prevent wear on the sides of the crusher base.
- Reversible manganese jaw plates provide for a severe duty wear surface that work-hardens and allows for maximum wear life.
- The massive cast steel pitman is heavily reinforced and finely machined to provide the ability to absorb the shock loads.
- Large balanced flywheels supply continuous driving force to the crushing action.
- The single toggle design incorporates a dual purpose toggle plate that not only allows for setting the discharge of the crusher, but is also designed as a shear point to protect the crusher in the case of tramp iron.
- Hydraulic shim adjustment minimizes downtime when changing the discharge setting and provides for quick and easy adjustments.
- Greater throughput combined with low-cost maintenance equals higher profits every day of operation. The Universal Jaw Crusher is field-proven worldwide as an efficient, cost-effective primary crusher in the toughest environments.

.....
Optional Equipment Available:

- Manual lube system piped to central location
- Fully automatic lube system piped to a central location
- V-belts
- Drive guard
- Electric motor
- Motor sheave

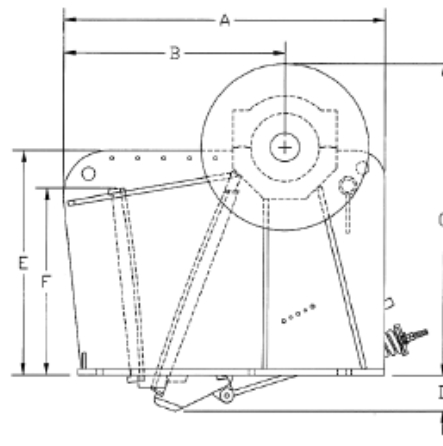
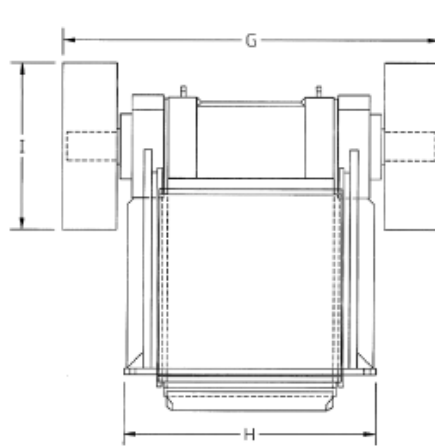
**CONTACT YOUR
UNIVERSAL DEALER**



INDUSTRIAL EQUIPMENT INCORPORATED
Concrete, Aggregate, and Material Handling Equipment
Concrete Solutions with Rock Solid Results
800-792-7427

**Info@
GulfAtlanticEquipment.com**

(800)
792-7427



(352)
628-6674

DIMENSIONS

JAW		A	B	C	D	E	F	G	H	I
2236	in mm	70.56 1,792	47.56 1,208	67.50 1,714	8.00 203	46.50 1,181	37.88 962	96.00 2,438	51.50 1,308	42.00 1,067
2248	in mm	84.00 2,134	57.87 1,470	83.50 2,121	8.00 203	57.50 1,461	42.63 1,083	108.00 2,743	68.00 1,727	52.00 1,321
2540	in mm	81.50 2,070	54.75 1,391	88.00 2,235	8.00 203	61.50 1,562	49.25 1,251	96.00 2,438	52.00 1,321	52.00 1,321
3242	in mm	99.44 2,526	68.44 1,738	97.25 2,470	11.25 286	70.25 1,784	58.50 1,486	100.38 2,550	66.00 1,676	52.00 1,321
3254	in mm	99.44 2,526	68.44 1,738	97.25 2,470	16.00 406	71.25 1,810	58.50 1,486	114.00 2,896	72.50 1,842	52.00 1,321
3648	in mm	117.00 2,972	77.75 1,975	125.19 3,180	13.00 330	91.94 2,335	77.69 1,973	120.00 3,048	76.50 1,943	65.00 1,651
4250	in mm	125.81 3,196	81.56 2,072	136.00 3,454	4.88 124	101.25 2,572	95.25 2,419	120.00 3,048	74.00 1,880	65.00 1,651
5060	in mm	152.56 3,875	108.56 2,757	170.50 4,331	13.50 343	130.00 3,302	114.38 2,905	128.00 3,251	93.25 2,369	78.00 1,981

SPECIFICATIONS

Model Number		2236	2248	2540	3242	3254	3648	4250	5060
Jaw Opening	in mm	22 x 36 559 x 914	22 x 48 559 x 1,219	25 x 40 635 x 1,016	32 x 42 813 x 1,067	32 x 54 813 x 1,372	36 x 48 914 x 1,219	42 x 50 1,067 x 1,270	50 x 60 1,270 x 1,524
Weight	lb kg	23,500 10,680	42,000 19,050	36,500 16,555	54,000 24,545	62,000 28,120	75,500 34,246	100,000 45,360	183,600 83,280
Horsepower Recommended Electric	HP kW	60 45	125 95	125 95	150 115	200 150	200 150	200 150	300 225
Operating Speed	RPM	250	250	250	225	225	225	225	200
Eccentric Shaft Material		forged steel	forged steel	forged steel	forged steel	forged steel	forged steel	forged steel	forged steel
Dia. @ Center	in(mm)	9.75(247)	11.00(279)	10.50(267)	13.38(340)	13.38(340)	14.13(359)	14.13(359)	17.75(451)
Dia. @ Pitman Bearing	in(mm)	8.66(220)	10.24(260)	9.45(240)	11.81(300)	11.81(300)	12.60(320)	12.60(320)	15.75(400)
Dia. @ Side Bearing	in(mm)	7.09(180)	8.66(220)	7.87(200)	10.24(260)	10.24(260)	11.02(280)	11.02(280)	14.17(360)
Dia. @ Flywheel	in(mm)	6.00(152)	6.94(176)	6.94(176)	9.00(229)	10.00(254)	10.00(254)	10.00(254)	12.00(305)
Overall Shaft Length	in(mm)	96(2,438)	108(2,743)	96(2,438)	102(2,591)	114(2,896)	112(2,845)	112(2,845)	120(3,048)
Jaw Material		manganese	manganese	manganese	manganese	manganese	manganese	manganese	manganese
Stationary Length	in(mm)	39.75(1,010)	46.00(1,168)	51.00(1,295)	60.50(1,537)	60.50(1,537)	76.00(1,930)	94.00(2,388)	110.00(2,794)
Movable Length	in(mm)	43.00(1,092)	52.00(1,321)	56.00(1,422)	68.25(1,734)	68.25(1,734)	85.00(2,159)	94.00(2,388)	121.00(3,073)
Max. Discharge Setting*	in(mm)	5.00(127)	8.00(203)	7.00(178)	12.00(305)	12.00(305)	13.00(330)	16.50(419)	20.00(508)
Min. Discharge Setting*	in(mm)	3.00(76)	3.00(76)	3.00(76)	4.00(102)	2.00(51)	2.88(73)	2.00(51)	6.00(152)
Flywheel Material		cast iron	cast iron	cast iron	cast iron	cast iron	cast iron	cast iron	cast iron
Dia. and Face	in x in mm x mm	42 x 12.50 1,069 x 318	52 x 14.75 1,321 x 375	52 x 14.75 1,321 x 375	52 x 16.75 1,321 x 425	52 x 16.75 1,321 x 425	65 x 21.00 1,651 x 533	65 x 21.00 1,651 x 533	78 x 18.00 1,981 x 457

*Measured peak to valley on jaw dies.

The information contained herein is general in nature and is not intended for specific construction, installation or application purposes. Predictions of actual performance of a given piece of equipment should take into account the many variable field factors, no warranty of any kind, expressed or implied, is extended by presenting the generalized data herein. We reserve the right to make changes in specifications

**CONTACT YOUR
UNIVERSAL DEALER**



INDUSTRIAL EQUIPMENT INCORPORATED
Concrete, Aggregate, and Material Handling Equipment
Concrete Solutions with Rock Solid Results
800-792-7427

**Info@
GulfAtlanticEquipment.com**