

**(800) 792-7427**  
**(352) 628-6674**

# UNIVERSAL DOUBLE ROLL CRUSHER



The Universal Roll Crusher is a field proven crusher designed to follow a primary or other reduction crushers in either rock or gravel and is ideal for manufacturing coarse sand. By design, it ensures uniformly sized material with less oversize thus reduces recirculating loads in your crushing circuit boosting capacity. When properly fed, the Universal Roll Crusher lowers your cost of operation by gaining full utilization of the manganese roll shells. The Roll Crusher's highly efficient rubber tire drive system on anti-friction bearings further reduces power loss in transmission to give you better use of your power input and lower consumption per ton of finished material. Rugged, dependable crushers, built to give you years of efficient profitable service. They are easy to install and require lighter foundations and structures than other types of crushers doing the same job.

### Standard Design Features:

- Rugged Roll Assemblies - Roll Shells smooth or corrugated are mounted over tapered cores and rings making shell replacement easier.
- Hydraulic Shim Adjustment - This feature makes product changes fast and simple to give the roll crusher greater application flexibility.
- Safety Springs - Maintain compression against floating roll to assure positive crushing action and sizing while allowing tramp iron to pass through.

Recommended Feed Size (Inches)															
Finished Product (Inches)	Two Smooth Rolls					One Smooth & One Corrugated Roll					Two Corrugated Rolls				
	Roll Diameter					Roll Diameter					Roll Diameter				
	18"	24"	30"	40"	54"	18"	24"	30"	40"	54"	18"	24"	30"	40"	54"
1/4"	5/8	3/4	7/8	1	1-1/4										
1/2"	7/8	1	1-1/4	1-1/2	2										
3/4"	1-1/2	1-3/4	2	2-1/2	3	1-7/8	2-1/4	2-5/8	3	4					
1"	1-3/4	2	2-1/4	2-3/4	3-1/4	2-1/8	2-1/2	2-7/8	3-5/8	4	2-1/2	3	3-1/2	4	4
1-1/4"	2	2-1/4	2-1/2	3	3-1/2	2-3/8	2-3/4	3-1/8	3-7/8	4-1/2	2-3/4	3-1/4	3-3/4	4-3/4	5
1-1/2"	2-1/4	2-1/2	2-3/4	3-1/4	3-3/4	2-5/8	3	3-3/8	4-1/8	4-3/4	3	3-1/2	4	5	5-3/4
1-3/4"	2-1/2	2-3/4	3	3-1/2	4	2-7/8	3-1/4	3-5/8	4-3/8	5	3-1/4	3-3/4	4-1/4	5-1/4	6
2"	2-3/4		3-1/4	3-3/4	4-1/4	3-1/8		3-7/8	4-5/8	5-1/4	3-1/2		4-1/2	5-1/2	6-1/4
2-1/2"			3-3/4	4-1/4	4-3/4			4-3/8	5-1/8	5-3/4			5	6	6-3/4
3"					5-1/4				5-5/8	6-1/4				6-1/2	7-1/4
4"					6-1/4					7-1/4					8-1/7

### Optional Equipment Available:

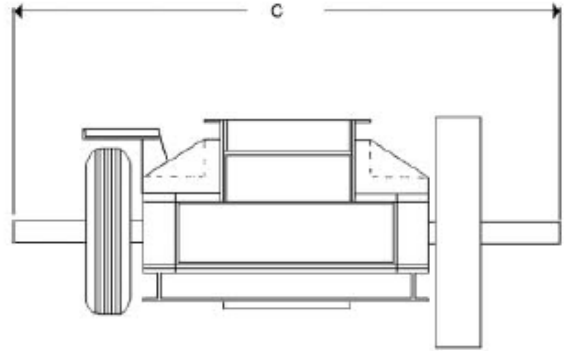
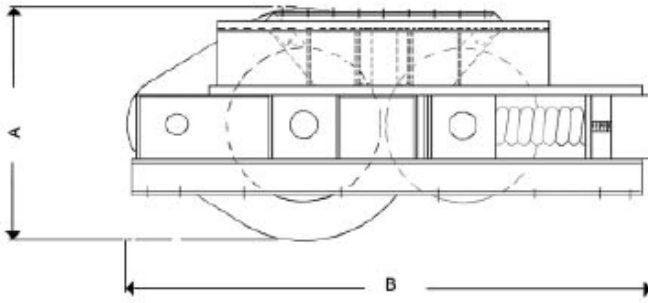
- V-belts
- Drive guard
- Electric motor
- Motor sheave

**CONTACT YOUR  
UNIVERSAL DEALER**



INDUSTRIAL EQUIPMENT INCORPORATED  
 Concrete, Aggregate, and Material Handling Equipment  
 Concrete Solutions with Rock Solid Results  
**800-792-7427**

**Info@  
GulfAtlanticEquipment.com**



## DIMENSIONS

MODEL		1818	2420	3026	3036	4024	4030	4036	5430
A = HEIGHT OVERALL	in	36.50	36.50	45.75	46.00	57.00	60.87	60.87	78.50
	mm	927.10	927.10	1,162.05	1,168.40	1,447.80	1,546.00	1,546.00	1,993.90
B = LENGTH OVERALL	in	76.06	82.69	97.66	97.87	115.75	132.00	134.00	180.56
	mm	1,931.92	2,100.33	2,480.56	2,485.90	2,940.06	3,352.80	3,403.60	4,586.22
C = WIDTH OVERALL	in	71.00	85.50	96.00	96.00	96.00	101.50	110.00	109.00
	mm	1,803.40	2,171.70	2,438.40	2,438.40	2,438.40	2,578.10	2,794.00	2,768.60
MAXIMUM OPENING	in	1.75	2.00	2.50	2.50	3.00	3.00	3.00	4.00
	mm	44.45	50.80	63.50	63.50	76.20	76.20	76.20	101.60
MINIMUM OPENING	in	0.25	0.25	0.25	0.25	0.25	0.25	0.25	0.25
	mm	6.35	6.35	6.35	6.35	6.35	6.35	6.35	6.35
WEIGHT	lb	5,600	8,250	13,500	18,500	19,750	25,360	30,360	43,660
	kg	2540	3742	6123	8391	8958	11,503	13,771	19,804
METHOD OF ADJUSTMENT		HYD SHIM	HYD SHIM	HYD SHIM	HYD SHIM	HYD SHIM	HYD SHIM	HYD SHIM	HYD SHIM

## SPECIFICATIONS

MODEL	HP REQUIRED		CAPACITIES (STPH)*										
	DIESEL	ELECTRIC	1/4"	1/2"	3/4"	1"	1-1/4"	1-1/2"	1-3/4"	2"	2-1/2"	3"	4"
1818	40-50	30	47	94	140	187	234	281	328	374			
2420	70-85	50	52	104	156	208	260	312	364	416			
3026	160-190	125	66	135	201	270	338	406	473	543	675		
3036	200-250	150	91	186	280	372	465	565	654	748	933		
4024	200-250	150	65	128	188	251	312	378	440	498	623	750	
4030	250-300	200	78	155	236	312	389	465	544	623	778	933	
4036	325-375	250	93	186	282	372	465	565	654	748	933	1,120	
5430	325-375	250	89	180	272	360	446	540	631	715	898	1,108	1,432

\* Capacities are based on 100% of theoretical ribbon at recommended speed. Consult factory for specific capacities by application.

**CONTACT YOUR  
UNIVERSAL DEALER**



**INDUSTRIAL EQUIPMENT INCORPORATED**  
Concrete, Aggregate, and Material Handling Equipment  
Concrete Solutions with Rock Solid Results  
**800-792-7427**

**Info@  
GulfAtlanticEquipment.com**